

From reproducibility to interactivity:



to



Mine Çetinkaya-Rundel

@minebocek 
mine-cetinkaya-rundel 
cetinkaya.mine@gmail.com 

more than **70** percent

have tried and **failed** to reproduce
another scientist's experiments

more than **50** percent

have tried and **failed** to reproduce
their **own** experiments

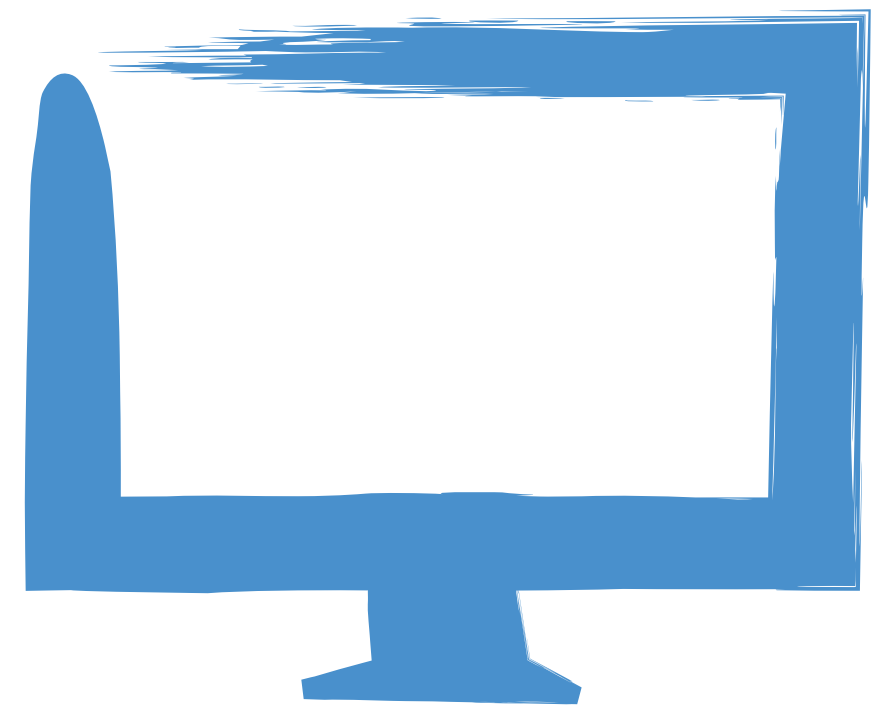
Google Scholar yields

940

results containing the term **reproducibility crisis**
just in **2019**

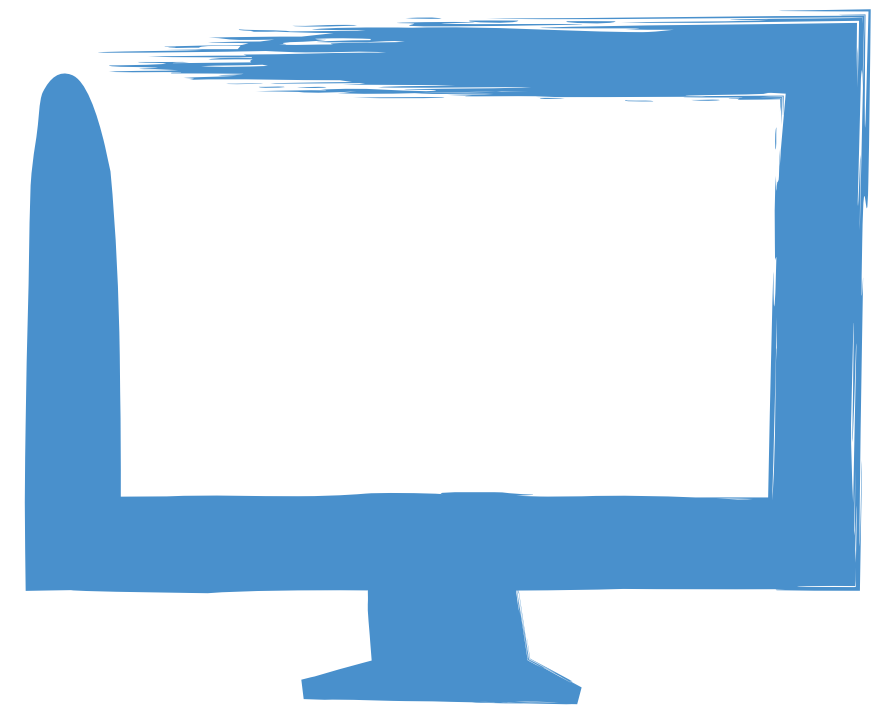
R Markdown

```
> 01-interactivity-in-r/01-rmd.Rmd
```



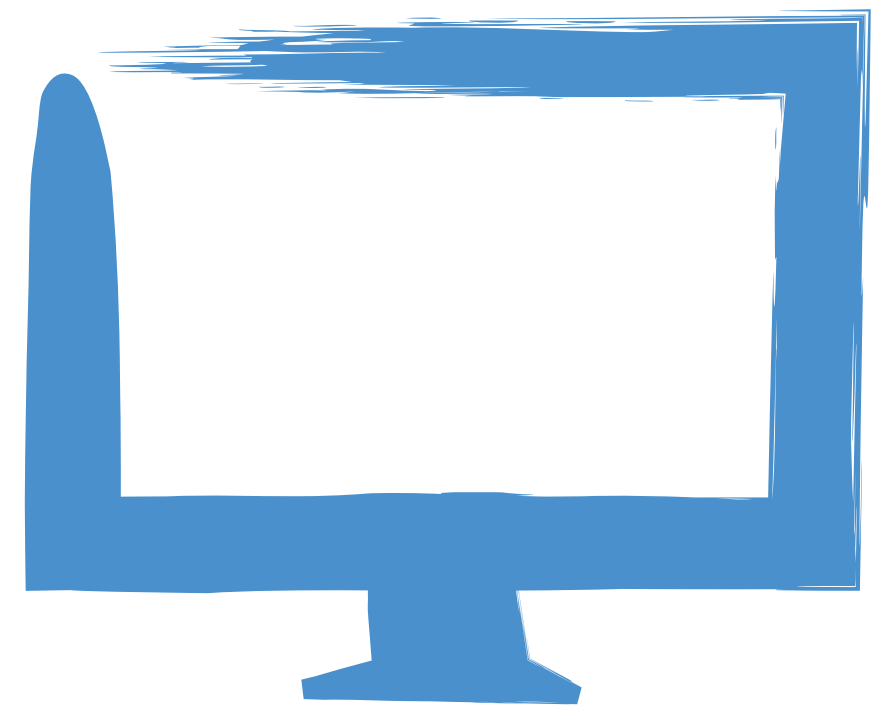
R Markdown + parameters

```
> 01-interactivity-in-r/02-rmd-with-parameters.Rmd
```



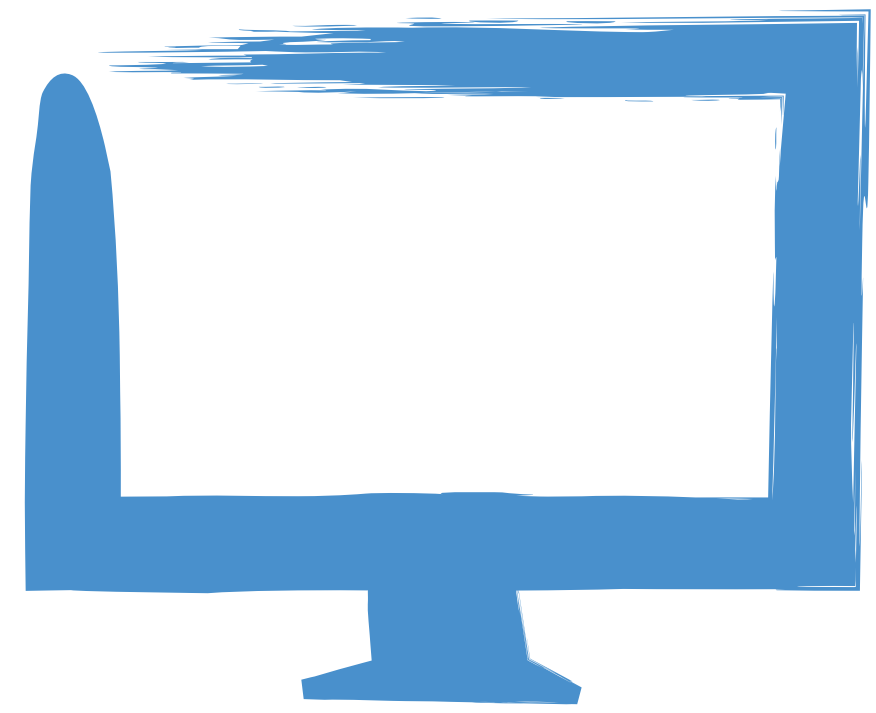
R Markdown + htmlwidgets

```
> 01-interactivity-in-r/03-rmd-with-htmlwidget.Rmd
```



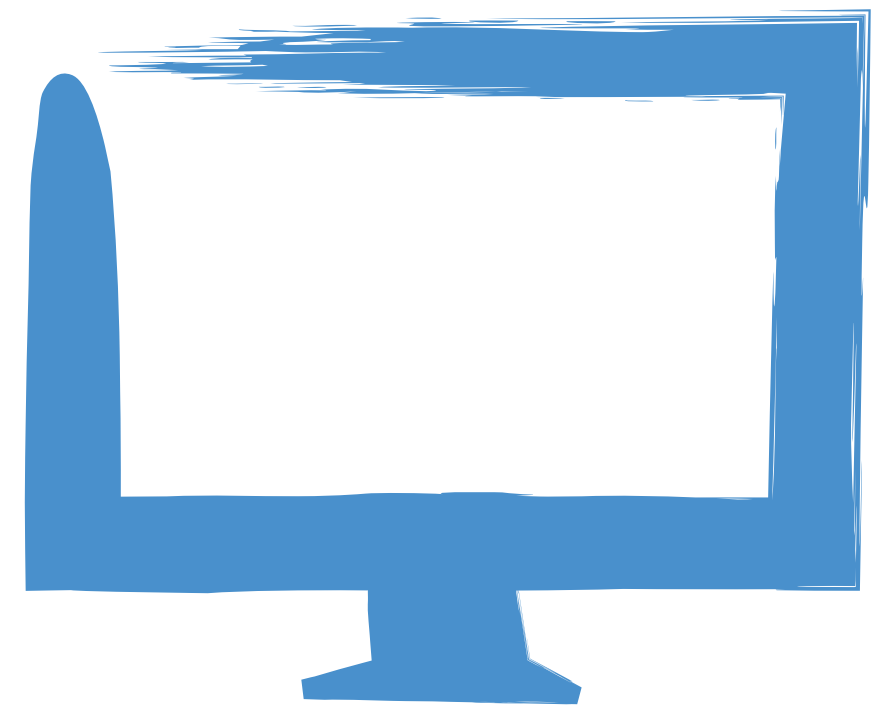
R Markdown + Shiny

```
> 01-interactivity-in-r/04-rmd-with-shiny.Rmd
```



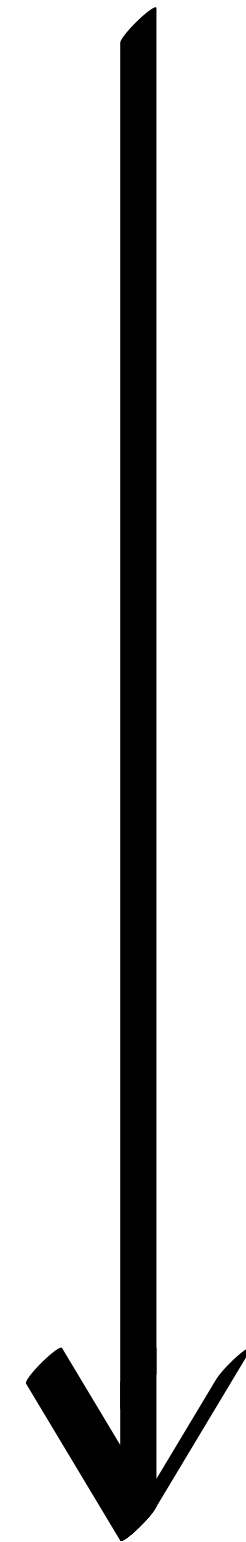
Flexdashboard + Shiny

```
> 01-interactivity-in-r/05-rmd-dashboard-with-shiny.Rmd
```



Ladder of interactivity

*More
interactive*



.Rmd

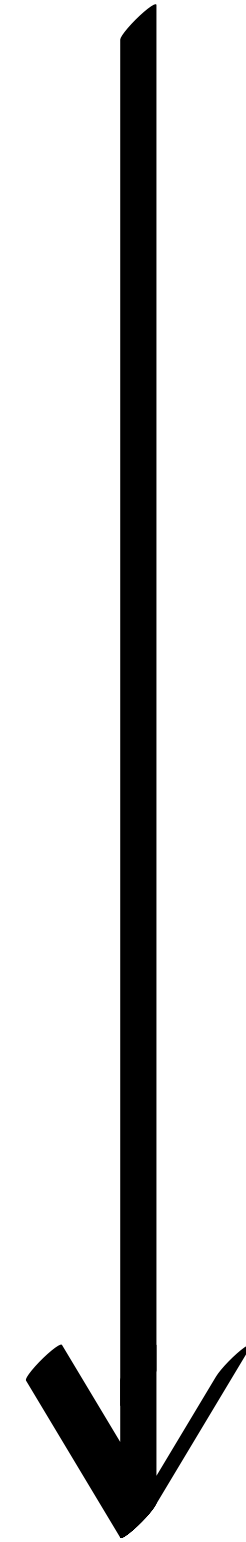
.Rmd with parameters

.Rmd with htmlwidgets

.Rmd with Shiny components

Shiny app

More
complicated



.Rmd

.Rmd with parameters

.Rmd with htmlwidgets

.Rmd with Shiny components

Shiny app

.Rmd

.Rmd with parameters

.Rmd with htmlwidgets

.Rmd with Shiny components

Shiny app

*Change the data more
than once per session?*

.Rmd

.Rmd with parameters

.Rmd with htmlwidgets

.Rmd with Shiny components

Shiny app

*Need more than
a document or
dashboard?*

Your turn

- ▶ Open **01-reproducible-to-interactive/06-shiny-to-param-rmd.R**, run the app, observe its functionality.
- ▶ Now open **01-reproducible-to-interactive/07-shiny-to-param-rmd.Rmd** and fill in the blanks to convert the app to a parametrised R Markdown document.

5_m 00_s



Solution

Solution to the previous exercise

> **`01-reproducible-to-interactive/08-shiny-to-param-rmd.Rmd`**

